

Printer Specifications

Printer Type
Monochrome Laser

Print Speed (default print mode: 2-sided)
Up to 17 ppm (2-sided, plain paper letter)*
Up to 35 ppm (1-sided, plain paper letter)*

First Print Time
Approx. 6 seconds (letter)

Printer Language
UFR II LT (Host-based)
[MF5950dw/MF5960dn]
PCL5/XL (45 fonts) [MF5960dn only]
PS 3 Emulation (45 fonts)
[MF5960dn only]

Print Resolution
Up to 600 x 600 dpi
1200 x 600 dpi quality

Maximum Print Size
Up to 8.5" x 14"

Duplex Print
Yes

Print Modes
Booklet, Poster, Watermark, Toner Saver, Page Composer

Print Memory
256MB (shared)

Direct Print From USB
Yes (JPEG, TIFF)

Copier Specifications

Copy Type
Monochrome Laser

Copy Speed
Up to 35 cpm (letter)

Duplex Copy Speed
Up to 17 cpm (letter)

Copy Resolution
Up to 600 x 600 dpi

Original Type
Text, Text/Photo, Text/Photo+, Photo

Halftones
256 levels

Warm-up Time
Approx. 11 seconds

First Copy Time
Approx. 8 seconds¹

Recovery Time
Approx. 5 seconds

Maximum Number of Copies
99 copies

Duplex Copy/Bind Type
Yes, 1 to 2/Book, Calendar

Reduction/Enlargement
25%, 50%, 64%, 78%/
129%, 200%, 400%

Zoom
25–400% in 1% increments

Copy Size
Platen: Up to 8.5" x 11"
ADF: 5.5" x 5" to 8.5" x 14"

Copy Features
Memory Sort, 2 on 1, 4 on 1, ID Card Copy

Copy Memory
256MB (shared)

Fax Specifications

Modem Speed
Up to 33.6 Kbps (Super G3)²

Fax Resolution
Up to 400 x 400 dpi (ultra fine)

Transmission Time
JBIG (approx. 3 seconds)

Memory Capacity
Up to 512 sheets³

Speed Dials
19 one-touch speed dials; 181 coded dials

Group Dialing
199 destinations

Sequential Broadcasting
Yes, up to 210 destinations

Duplex Fax
Yes

Receive Modes
Fax only, Manual, Answering, Fax/Tel Auto Switch

Fax Features
Distinctive Ring Pattern Detection, Error Correction Mode, Remote RX, Dual Access, Auto Redial, Collate, Auto Fax Reduction

Memory Backup
Yes, 1 hour

Activity Reports
Yes, Activity Result & Activity Management

PC Fax
Yes (sending only)

Fax Forwarding
Yes (Fax → Fax, Email, SMB)

Scanner Specifications

Scan Type
Color Contact Image Sensor (CIS)

Color Depth
24-bit

Scan Resolution
Up to 600 x 600 dpi (optical)
Up to 9600 x 9600 dpi (interpolated)

Scan Size
Platen: Up to 8.5" x 11"
ADF: 5.5" x 5" to 8.5" x 14"

Duplex Scan
Yes

Compatibility
TWAIN, WIA

Output File Formats
Hi-Compression PDF, Searchable PDF⁴, PDF, JPEG, TIFF, BMP, PNG⁵

Scan Features
Scan to USB Host 1.1 (Hi-Compression PDF, PDF, JPEG, TIFF), Rotate Image

Pull Scan
Yes, USB & Network

Push Scan (Scan to PC)
Yes, USB & Network

Send Specifications

Scan to Email
Yes (Hi-Compression PDF, PDF)

Scan to SMB
Yes (Hi-Compression PDF, PDF, JPEG, TIFF)

Paper Handling Specifications

Standard Paper Source(s)
250-sheet cassette⁶ plus
50-sheet multipurpose tray⁶

Optional Paper Source(s)
500-sheet cassette⁶

Document Feeder
50-sheet duplex⁶

Paper Output
150 sheets (face down)

Paper Weight
16 to 32 lb. bond (cassette)
16 to 51 lb. bond (multipurpose tray)

Media Sizes
Letter, Legal, A4, A5, B5, Statement, Executive

Media Types
Plain Paper, Heavy Paper, Bond Paper, Labels, Small Documents (i.e. Index Card)

Envelope Capacity
5 envelopes (multipurpose tray)

Envelope Types
Com 10, Monarch, DL, C5, B5

Connectivity & Software Specifications

Standard Interface(s)
USB 2.0 Hi-Speed⁷, 10/100 Base-T Ethernet [MF5950dw/MF5960dn]
IEEE 802.11 b/g/n (wireless)⁸
[MF5950dw only]

WiFi Access Mode
[MF5950dw only]
Infrastructure Mode

WiFi Authentication Methods
[MF5950dw only]
Open System, Shared Key, WPA-PSK, WPA2-PSK

WiFi Encryption Modes
[MF5950dw only]
WEP (64/128-bit), TKIP, AES

WPS Easy Setup Support Methods
[MF5950dw only]
Push-button mode, PIN code mode

USB Functions
Print, PC Fax, Scan

Network Functions
Print, PC Fax, Scan

Embedded Web Server (Remote UI)
Yes

Web Browser Support for Remote UI
Microsoft Internet Explorer 6.0 or higher, Safari 3.2.1 or higher

Print Protocols
LPD, RAW, WSD

Supported Network Protocols
TCP/IP v.4, TCP/IP v.6 (print only)

TCP/IP Set of Application Services
DHCP, BOOTP, RARP, ARP+PING, Auto IP, Bonjour, HTTP, SHTTP, NetBIOS

Network Management Protocols
SNMP v.1, SNMP v.3⁹

MIB
RFC1213 (MIB-II), RFC1514 (Host Resources MIB), RFC1759 (Printer MIB), Canon MIB

Operating Systems

Windows® 7, Windows Server® 2008¹⁰, Windows Vista®, Windows Server 2003¹⁰, Windows XP/2000, Mac® OS X 10.4.9 & up, Linux¹¹ (print only)

Cable Included
Power Cord, Phone Cable (USB not included)

Bundled Software
Canon Drivers, MF ToolBox, Document Management & OCR Software

Drivers available for download from usa.canon.com

Environmental Specifications

Power Consumption
Maximum: Approx. 1100W
Standby: Approx. 9W
Energy Saver: Approx. 2.3W
[MF5950dw/MF5960dn]
(Approx. 3.0W by wireless connection)
[MF5950dw only]

Typical Energy Consumption (TEC)
1.4kWh

General Specifications

Dimensions
15.4" (W) x 18.6" (D) x 17.0" (H)

Unit Weight (without/with cartridge)
Approx. 40.4 lbs./42.2 lbs.

Package Weight
Approx. 50.7 lbs.

Warranty
1 year limited exchange/carry-in warranty¹²
(Extended warranty available)

Cartridge 119
Yields approximately 2,100 pages based on ISO/IEC Standard

Cartridge 119 II (Hi-Capacity)
Yields approximately 6,400 pages based on ISO/IEC Standard

Cartridge Type
Single Cartridge System

Department Counter
Yes

LCD Display
5-row backlit LCD w/animation (fax installation, toner installation, paper jam)

Duty Cycle
Up to 15,000 pages per month

Department ID Management
Yes (up to 300 IDs)

Additional Security
IP Filtering, MAC Address Filtering, Secure Print

Languages
English, French, Spanish, Portuguese

One-Touch Keys
Four (Secure Print, Eco Copy, Scan to PC1, Scan to PC2)

Features and specifications are subject to change without notice.

* Print speed is based on internal testing. Print speed may vary depending on the number of copies selected, as well as on the settings for size, type and orientation of paper.

- Letter size, after being restored from Energy Saver mode.
- The Public Switched Telephone Network currently supports fax modem speeds of 28.8 Kbps or lower, depending on telephone line conditions. Sending and receiving fax machines need to conform to ITU-T v.34 guidelines.
- Based on ITU-T #1 Chart (standard mode).
- Combined with ToolBox feature. Hi-Compression PDF and Searchable PDF are Windows only.
- PNG supports Mac OS only.
- Based on 20 lb. bond paper.
- USB 2.0 Hi-Speed requires Windows® 7, Windows Vista®, Windows XP/2000 or Mac OS X operating systems. For Windows 98, Me and Mac OS X v. 10.2 to 10.2.6 operating systems, the printer/scanner will operate at USB 1.1 specifications.
- Wireless performance may vary based on terrain and distance between the printer and wireless network clients.
- SNMP v.3 supports Print and Send (Scan to Email/SMB) functions only.
- Server 2003, Server 2008 via network connection only.
- Mac® OS X 10.4.9 and up and Linux® OS (print only) compatibility to be announced; visit usa.canon.com for driver download availability.
- Warranty program is subject to certain conditions and restrictions. See the warranty card for details.



©2011 Canon U.S.A., Inc. Canon and imageCLASS are registered trademarks of Canon Inc. in the United States and may be registered trademarks or trademarks in other countries. imageANYWARE is a trademark of Canon U.S.A., Inc. The Super G3 logo is a trademark of Canon Inc. Microsoft, Windows, the Windows logo and Windows 7 are either trademarks or registered trademarks of Microsoft Corporation in the United States and/or other countries. Wi-Fi is a registered trademark of the Wi-Fi Alliance. The "Wi-Fi CERTIFIED" logo is a certification mark of the Wi-Fi Alliance. The Wi-Fi Protected Setup Mark is a mark of the Wi-Fi Alliance. All other product and brand names are trademarks of their respective owners. Specifications are subject to change without notice. As an ENERGY STAR partner, Canon U.S.A., Inc. has determined that this product meets the ENERGY STAR guidelines for energy efficiency. The limited warranty given by Canon U.S.A., Inc. is for Canon imageCLASS MF5950dw and MF5960dn models purchased and used in the United States.

Canon
imageANYWARE

Canon

M F 5 9 5 0 d w

M F 5 9 6 0 d n

imageCLASS

MF 5900 Series

Black & White Laser Multifunction Printers

- Print and copy at **up to 35 ppm** in black & white
- **Quick First Print** provides first print time of approximately 6 seconds and first copy in approximately 8 seconds*
- **Super G3 fax**
- Scan in color up to **9600 dpi** quality (interpolated) with up to 600 dpi optical resolution
- **Scan to and print from USB** for documents on the go
- **Send** scanned documents directly to **email or file server**
- **250-sheet cassette** plus 50-sheet multipurpose tray**
- Up to **50-sheet** DADF** (Duplex Automatic Document Feeder)
- **Remote device management** through embedded web server
- **Built-in Ethernet port** for network printing, PC faxing and scanning
- **USB 2.0 Hi-Speed** for optimal performance
- Efficient energy-saving mode; approximately **2.3W** [MF5960dn], **3W** [MF5950dw] of energy used
- **User Friendly 5-line LCD** for easy navigation
- Password-protected **Department ID Management** helps to control device usage
- **Single Cartridge System** for cost-efficient supplies replenishment



Print, Copy, Fax, Scan with the imageCLASS® MF5900 Series Black & White Laser Multifunction Printers from Canon.

WiFi Capable: [MF5950dw only]

Access all functions wirelessly, along with encryption mode and easy setup support methods.

Duplex Versatility:

Print on two sides out of the box – use half the paper! Two-sided output for printing, copying and receiving faxes saves space and reduces paper consumption.

Quick First Print:

Why waste time waiting for your print to arrive? With Canon's Quick First Print technology, your first print will arrive in approximately 6 seconds.

Desktop Solution:

Specifically designed for small to medium sized offices, providing convenient access to the office functions you require.

Network Capabilities:

Increase productivity and cost-efficiency with the built-in Ethernet port for networking. Share printing, PC faxing and scanning directly from a PC.

* Letter size, after being restored from Energy Saver Mode.

** Based on 20 lb. bond paper.



DUPLIX VERSATILITY

35
Black
ppm/cpm

QUICK
1st
PRIN T



ECO-CONSCIOUS

FAX
33.6 kbps

Network SCAN
600×600 dpi



Ethernet

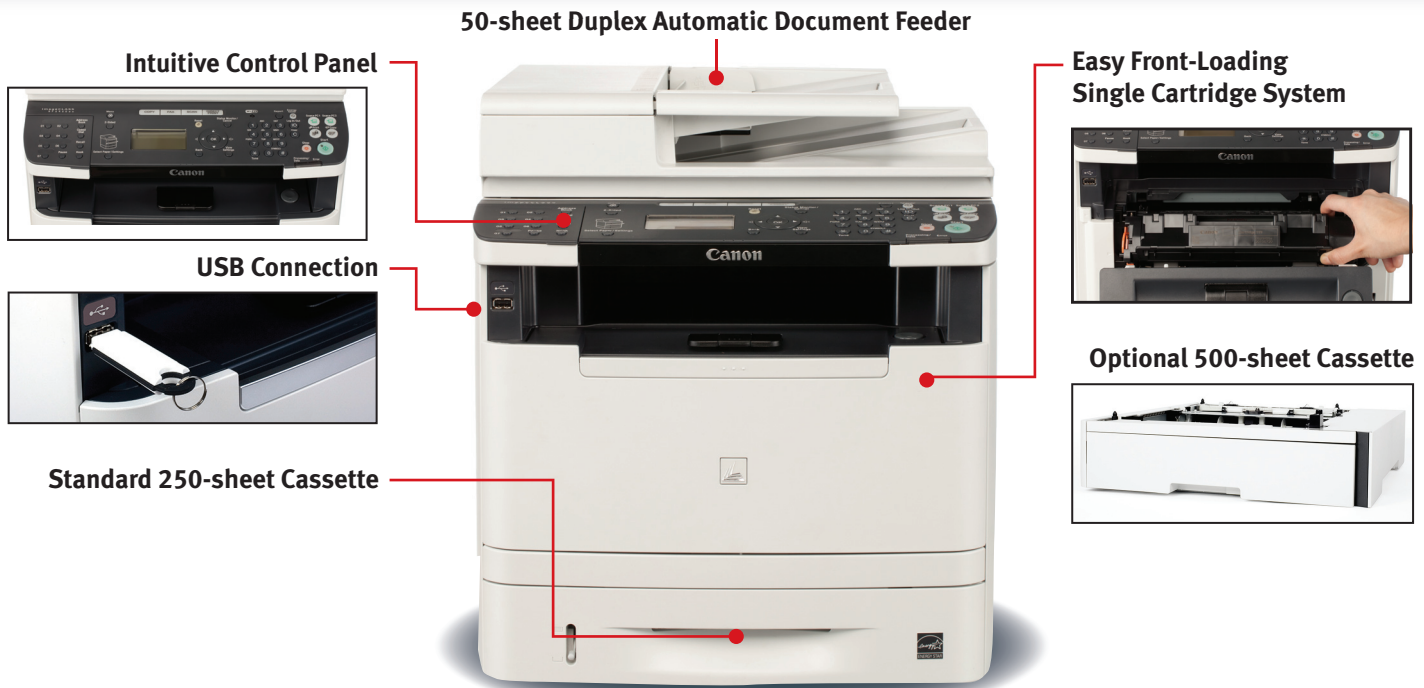
SINGLE
CARTRIDGE SYSTEM



WiFi

imageCLASS MF 5900 Series

Black and White Laser Multifunction Printers



15.4" (W) x 18.6" (D) x 17.0" (H)
Compact for ease of use in small office and workgroup environments.

Advanced Performance and Versatility

Fast, Accurate Printing

For fast and accurate printing, Canon's Quick First Print technology prints the first page in approximately 6 seconds. You can print multi-page documents in a short time too, at print speeds of up to 35 pages per minute.

Auto Duplex

Available two-sided duplex functionality allows you to print, copy, fax or color scan from one- or two-sided originals to produce two-sided output with ease, cutting your paper usage by as much as fifty percent.

Large Paper Capacity

For increased paper versatility, both machines offer a 250-sheet front-loading paper cassette and a 50-sheet multipurpose tray. Additionally, busy office environments may take advantage of the ability to add an optional 500-sheet paper cassette.

Enhanced Features


Direct Print/Scan to USB

If you're on-the-go, both machines offer a USB port to facilitate scanning files directly to, or printing files directly from, a USB drive.

Department ID Management

A key way to control output costs is by setting limits on who can use the machine. Department ID Management allows an administrator to set up to 300 User IDs and Passwords, so that departmental costs may be monitored and controlled.

Cost Control



<u>Executive Suite</u>	✓	✓	✓
PRINT	COPY	SCAN	
<u>Purchasing Dept.</u>	✓	✓	✗
PRINT	COPY	SCAN	
<u>Marketing Dept.</u>	✗	✗	✓
PRINT	COPY	SCAN	

imageCLASS MF5900 Series

Black and White Laser Multifunction Printers

Document Control

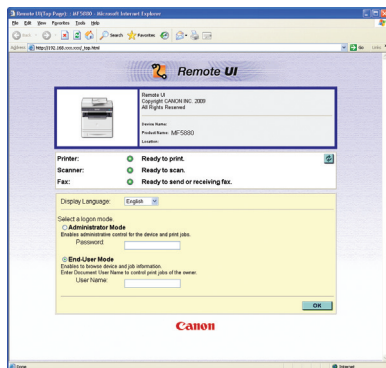
You can set the machine to forward your received fax and internet fax documents to an email address, network folder



or another fax number. Your gain is enhanced document control. No longer do you need to interrupt your work to retrieve an incoming fax and locate the person it's intended for.

Remote Device Management

The MF5900 Series includes an embedded web server (remote UI) so you can manage the device from a standard Web browser. Separate administrator (password-protected) and end-user modes allow you to remotely view and modify your network settings, import an address book, or even retrieve an activity log.



Environmentally Conscious

Energy Saver Mode

The intelligent Energy Saver Mode reduces your power consumption to approximately 3W or less.



Generation Green



The MF5900 series is part of Canon's Generation Green program which highlights the company's commitment to sustainability.

Built to Fit Your Needs

Each of these machines offers distinct features that are meant to cater to the different needs of users. Whether you're part of a large IT department, or just starting out your small business with a few employees, find your solution with the MF5900 Series.

MF5950dw

Connect Wirelessly

By going wireless, you'll have the freedom to place the MFP almost anywhere in your home or small office, and easily send print jobs from your laptop. Furthermore, you'll reduce wiring clutter and help prevent security breaches with WEP and WPA-PSK.

MF5960dn

Printer Language Versatility

The MF5960dn features Canon's proprietary host-based printer language UFR II LT (Ultra Fast Rendering), which takes full advantage of your PC's processing power so your printer does not require additional memory to perform high-speed processing. If your applications require PCL (Printer Command Language) or PostScript 3 Emulation support, you'll also find these on the MF5960dn.

Ordering Information

Laser Multifunction Printers and Options

imageCLASS MF5950dw Laser Multifunction Printer
imageCLASS MF5960dn Laser Multifunction Printer
Cartridge 119 Black Standard
(yields approx. 2,100 pages based on ISO/IEC Standard)
Cartridge 119 II (Hi-Capacity)
(yields approx. 6,400 pages based on ISO/IEC Standard)
Paper Feeder PF-44
imageCLASS MF5900s Virtual CarePAK
imageCLASS MF5900s E-CarePAK

Item No.

4838B006AA
4838B010AA
3479B001AA
3480B001AA
3439B001AA
4838B037AA
5707B011AA

For More Information Visit

www.usa.canon.com/consumer

For the name of the nearest dealer,
call: 1-800-OK-CANON

Canon U.S.A., Inc.
One Canon Plaza
Lake Success NY 11042